



# DELTA-XERO

THE FUTURE IS SYSTEM RELIABILITY

## DX1012-T

The DX modular housing arrangement offers a flexible and space conscious solution to integrate our innovative DXO Cartridge in to both new and existing systems. The Delta-Xero system can be configured up to 12 cartridges in parallel as a single unit in a compact and easily maintainable layout.

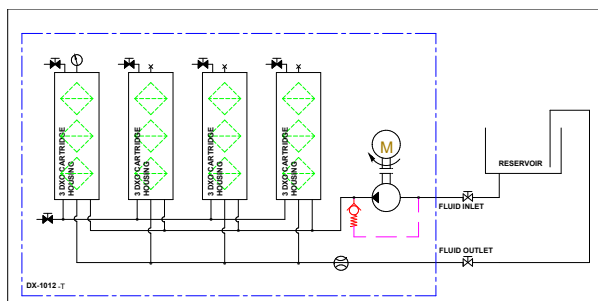
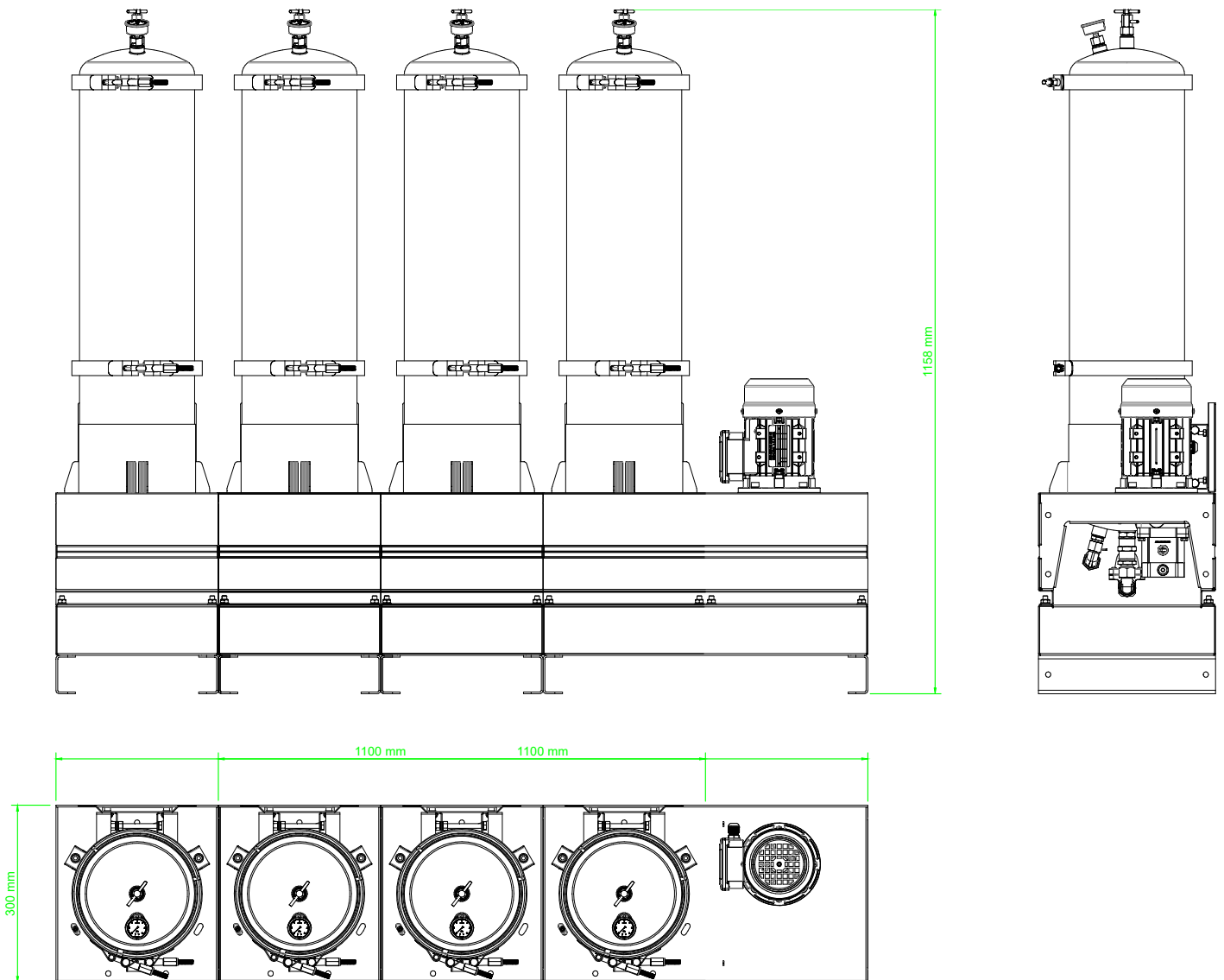
The unit can be supplied with a number of standard options to provide an effective fluid conditioning and monitoring package to suit the majority of systems. The flexibility of the unit allows tailoring to customer's specific requirements.



### DX1012-T

|  |                                  |                      |                   |
|--|----------------------------------|----------------------|-------------------|
| Drive Input  | Electric or Pneumatic            |                      |                   |
| Connection Ports   | 3/8" BSP In & Out                |                      |                   |
| Flow Indicator   | Visual                           |                      |                   |
| Suggested System Volume  | Up to 72000ltrs @ 32cSt          |                      |                   |
| Particulate Removal  | From 0.1 $\mu$                   |                      |                   |
| Weight   | 85 kg                            |                      |                   |
| Dimensions   | H 1158 mm x D 300 mm x L 1374 mm |                      |                   |
| Material   | SS316                            |                      |                   |
| DXO Cartridge QTY  | 12                               |                      |                   |
| Flow Rate <small>varies depending on viscosity, pressure and temperature</small> | Approx flow at 2.7 bar:          | 32 cSt<br>12.7 l/min | 46 cSt<br>9 l/min |
|  | Oil Volume                       | 72000ltrs            | 61000ltrs         |

## General Arrangement



### DXO Cartridge

|                                   |                     |
|-----------------------------------|---------------------|
| Contamination capacity:           | Up to 4.5kg per DXO |
| Water absorption, free and bound: | 2600ml              |
| Material Insert:                  | PP Cellulose mix    |

